

Product description: imi-rost composite board

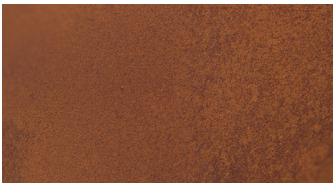
- The **imi-rost** composite board is available in 2 thicknesses and 4 designs.
- The default carrier board is a 19 mm MDF or 0.9 mm HPL board.
- The rear is applied with white melamine counter-pull for MDF. The HPL board is raw on the rear.
- The top is coated with a flexible, mineral **imi-rost** coating with a thickness of 1 - 3 mm, which contains a real metal iron layer.
- The mineral imi- coating is classified according to DIN 13501-1 as flame retardant B-s1, d0.
- The boards can easily be processed with conventional carbide-equipped carpentry tools.
- The surfaces are painted with a matte varnish.
- For a higher strain, we recommend an additional matte protective coat of varnish.
- The surfaces behaves like corten steel.

Usage options:

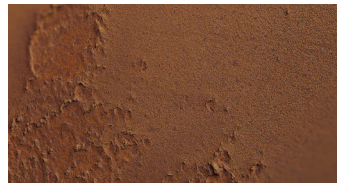
E.g. furniture, inner doors, furniture fronts, shop and trade fair constructions, interior design, e.g. wall panellings, platform constructions, etc.

Designs:

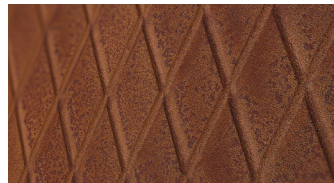
329 imi-rost smooth



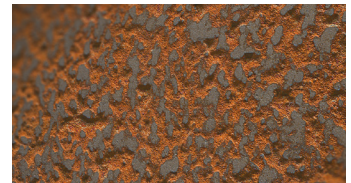
330 imi-rost deep



331 imi-rost diamond



341 imi-rost precious rust



Technical details:

Dimensions	MDF	HPL
Standard	2,600 x 1,010 mm	3,030 x 1,280 mm
Large	3,030 x 1,200 mm	
Maximum	3,400 x 1,300 mm	
Customized production		
Thicknesses	approx. 20 mm	approx. 2 mm
Weight	approx. 16 k/m ²	approx. 3 kg/m ²

Processing:

Edges	Edges must be protected with an ABS or real imi-rost edge all around. Version 1 : ABS or real imi-rost edge. <ol style="list-style-type: none">1. Start up as usual, but switch off the swabble unit and the buffer unit.2. Paint any milled imi-coating with imi-rost outer coat.3. Apply matte varnish again if applicable. Version 2. Paint with imi-rost outer coat.
Sawing/drilling/milling	With regular carbide-equipped tools. Diamond-equipped tools are not necessary.
Screws	Screw extraction resistance as in MDF, pre-drilling is recommended.
Bond	Commercial wood glues.
Cleaning/care	The imi-rost surface must be treated like a normally veneered, painted surface. Cleaning is possible with a mist-moistened rag.
Packaging	Lying on pallet.
Storage	Store dry, interim layers with corrugated cardboard or foam foil. Protect from frost.
Recycling	Product is ecologically harmless, can be recycled and disposed of in the household waste.

Information is provided according to our best knowledge. The contents are, however, not legally binding. The user is not released from verifying that the materials are suitable for the intended purpose. Technical changes reserved.

The main component of the mineral imi coating is organic so that colour shadings between different lots can not be excluded completely. Samples of these materials only show the general appearance and cannot unite the characteristics like colour, texture and structure. Differences of any kind, as well as air inclusions, are natural and no reason for claim. Low distortion as well as little displacements in the joint area and minor gap formation cannot be fully excluded.